

MILL'S PRIDE™

KITCHEN & BATH CABINETRY

Quick Ship | Quick Assembly

NEW for 2023
Richmond Valencia Blue

**PLYWOOD
CABINETRY**

SPECIFICATION GUIDE

 MillsPride.com  866-931-6874

MillsPride.com



HomerDesignTools.com



Exclusively at





Kitchen Cabinetry

15 Year Limited Warranty

Ideal Cabinetry® (warrantor) warrants to the original consumer purchaser, that all products manufactured or supplied by warrantor will be free from defects in material and workmanship. This warranty is for a period of fifteen years as long as you own the cabinetry, on product used for Residential Purposes only and is not transferable to subsequent owners. Proof of Purchase is required.

This warranty does not cover damage resulting from normal wear, accident, misuse or lack of reasonable and necessary maintenance and service; nor does it warranty the improper installation or unauthorized repair, alteration, or modification or defects in the product when the product is installed. This warranty is limited to the repair or replacement of the defective part at the sole discretion of warrantor. Warranty is limited to Mill's Pride™ branded products excluding all electrical components: Excluded items may carry separate warranties as provided directly by the manufacturer of these products.

It is our option to provide repair parts or replace with functionally equivalent product. Return of product may be required for replacements. Such repair parts or replacement shall be at warrantor's expense, but customer shall bear all other expenses, including, but not limited to, cost of removal, transportation, re-installation, communication and any special service required by customer such as, overtime labor, etc.

Cabinets may darken or lighten with age due to exposure to certain environmental conditions including but not limited to sunlight, moisture, household cleaners, smoke, etc. These variations are considered the natural characteristics of the material and finishes and are not covered under this warranty.

In the event of a warranted product performance issue, submit request including proof of purchase documentation, specific description of warranty issue (include photos) in writing to:

Warranty Department
210 Century Boulevard
Bartow, FL 33830

Due to nature of materials and finishes Ideal Cabinetry cannot guarantee warranty replacement will be an exact match.

Ideal Cabinetry reserves the right to alter design, specifications and material without obligation to make changes to product previously manufactured.

EXCEPT TO THE EXTENT PROVIDED BY APPLICABLE LAW, ALL IMPLIED WARRANTIES, INCLUDING WARRANTIES OF MERCHANTABILITY AND FITNESS FOR A PARTICULAR PURPOSE, ARE LIMITED IN DURATION TO THE SHORTER OF THE PERIOD PROVIDED BY LAW OR THE PERIOD OF THIS WARRANTY, AND UNDER NO CIRCUMSTANCE SHALL MILL'S PRIDE™ BE LIABLE FOR INCIDENTAL OR CONSEQUENTIAL DAMAGES SUSTAINED IN CONNECTION WITH THE PRODUCT. THE EXPRESS WARRANTY ABOVE CONSTITUTES THE ENTIRE WARRANTY AND IS IN LIEU OF ALL OTHERS EXPRESSED OR IMPLIED.

Some states do not allow the exclusion or limitation of incidental or consequential damages, or limitation on how long an implied warranty lasts, therefore, the above limitations or exclusions may not apply to you. This warranty gives you specific legal rights, and you may also have other rights, which vary from state to state.

INDEMNITY

Ideal Cabinetry shall not be liable for either its failure to perform or its delays in performance hereunder arising out of or resulting from causes beyond its control, including but not limited to, acts of God, acts of Representation, acts of Government, wars, fires, floods, epidemics, quarantine, strike, freight embargoes, weather or default by suppliers due to any such causes.

Table of Contents



Door Styles	2-3
Cabinet Construction	4
Finished End.....	4
Wall Cabinets	5-7
Base Cabinets	8-9
Tall Cabinets	10
Accessories/ Decorative Molding <i>(includes crowns)</i>	11
Cabinet Frame & Opening Dimensions	12-13



Scan to
Buy Online



Scan to
Shop



Scan to
Assemble



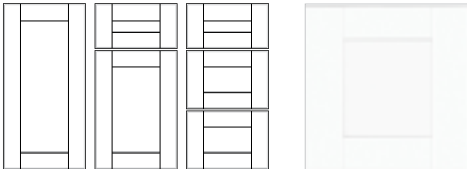
Scan to
FAQs

PLEASE NOTE: Line drawings are artistic representations of products for general dimensioning purposes. These should not be relied upon for accurate product appearance. Please consult the website or a designer if you have any questions or specific design requirements. Photography is for illustration purposes. Actual colors may vary slightly due to the printing process. We recommend ordering a sample door to see the color and finish you like for yourself.

Shaker Square Recessed Panel Door Styles



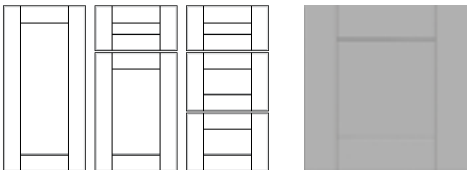
NEW for 2023 - Richmond Verona White



- 3/4" thick vinyl clad MDF recessed panel doors with flat melamine back
- 3/4" thick vinyl clad MDF recessed panel drawer fronts with flat melamine back
- Soft close hinges & full extension drawers with soft close
- Decorative hardware required



NEW for 2023 - Richmond Vesuvius Gray*



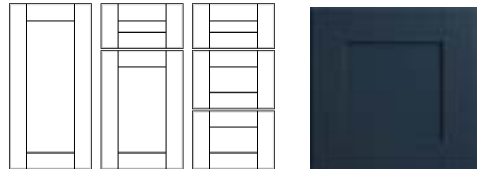
- 3/4" thick vinyl clad MDF recessed panel doors with flat melamine back
- 3/4" thick vinyl clad MDF recessed panel drawer fronts with flat melamine back
- Soft close hinges & full extension drawers with soft close
- Decorative hardware required

*Back of door and drawer front feature a white finish

Shaker Square Recessed Panel Door Styles



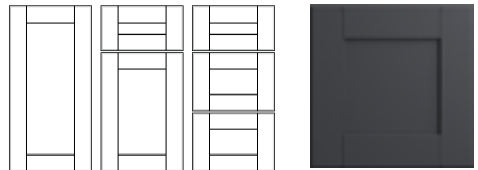
NEW for 2023 - Richmond Valencia Blue*



- 3/4" thick vinyl clad MDF recessed panel doors with flat white melamine back
- 3/4" thick vinyl clad MDF recessed panel drawer fronts with flat white melamine back
- Soft close hinges & full extension drawers with soft close
- Decorative hardware required

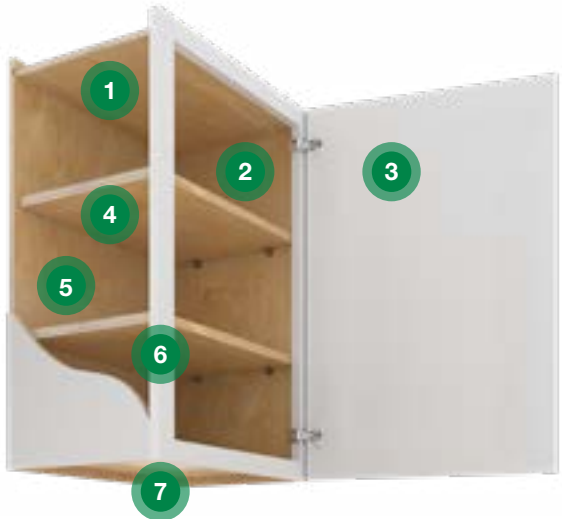


NEW for 2023 - Richmond Venetian Onyx*



- 3/4" thick vinyl clad MDF recessed panel doors with flat white melamine back
- 3/4" thick vinyl clad MDF recessed panel drawer fronts with flat white melamine back
- Soft close hinges & full extension drawers with soft close
- Decorative hardware required

*Back of door and drawer front feature a white finish



CABINET CONSTRUCTION

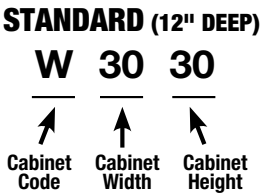
- 1. **CEILING PANEL** Captured 1/2" thick plywood
- 2. **INTERIOR FINISH** Light Birch Laminate
- 3. **SOFT CLOSE DOORS** Standard on most cabinets
- 4. **ADJUSTABLE SHELVES** Full depth 3/4" thick plywood
- 5. **BACK PANEL** 1/2" thick plywood
- 6. **FACE FRAMES** 3/4" thick
- 7. **FLOOR PANEL** Captured 1/2" thick plywood
- 8. **"I-BEAM" BRACES** Captured 1/2" thick plywood
- 9. **FULL EXTENSION SOFT CLOSE DRAWERS**
Drawer box is 5/8" thick with dovetail carpentry joints
- 10. **END PANELS** 1/2" thick plywood, exterior laminate matches face frame finish
- 11. **TOE KICK** Captured 1/2" thick plywood



PLAY
DESIGN TIP

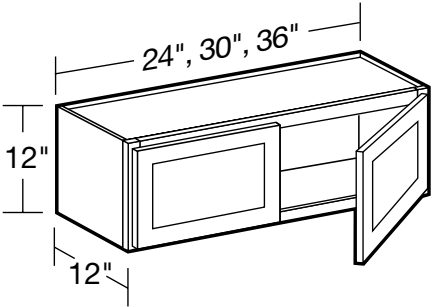
Standard End Panels are 1/2" thick CARB2. Exterior laminate matches face frame finish.

WALL CABINET CODING



- All wall cabinets are 12" deep unless otherwise noted.
- Cabinet depth does not include door thickness
- Products are available in all door styles unless stated otherwise
- Standard cabinet exterior is color matched to face frame
- Soft close hinges

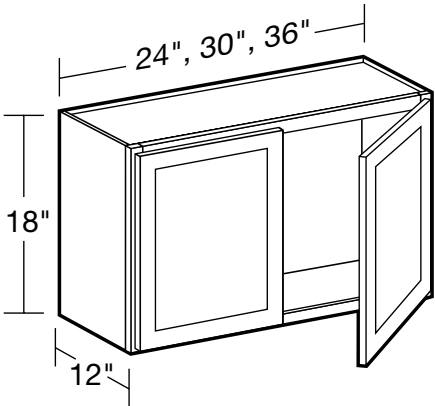
12" High Double Door



W2412
W3012
W3612

- No adjustable shelf

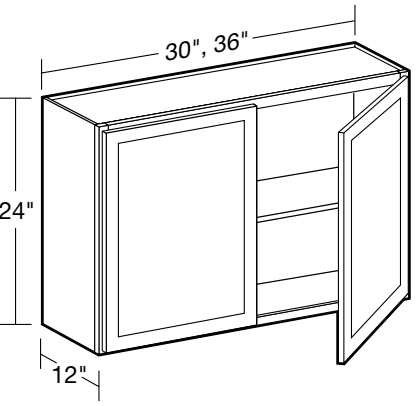
18" High Double Door



W2418
W3018
W3618

- No adjustable shelf

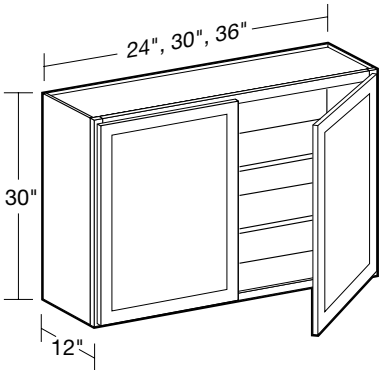
24" High Double Door



W3024
W3624

- One adjustable shelf

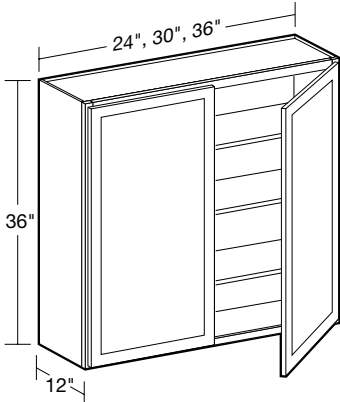
30" High Double Door



W2430
W3030
W3630

- Two adjustable shelves

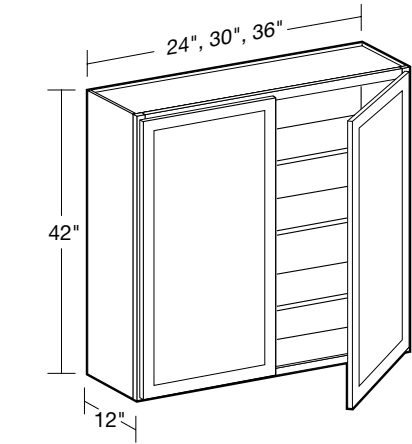
36" High Double Door



W2436
W3036
W3636

- Three adjustable shelves

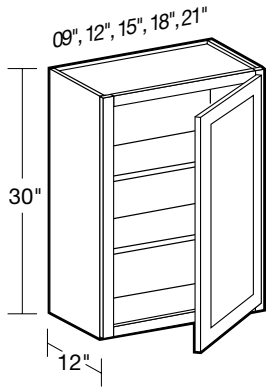
42" High Double Door



W2442
W3042
W3642

- Three adjustable shelves

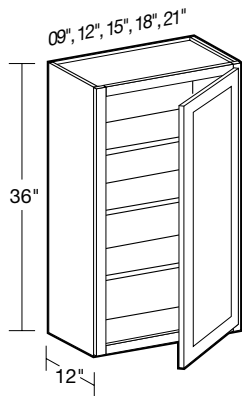
30" High Single Door



W0930
W1230
W1530
W1830
W2130

- Two adjustable shelves

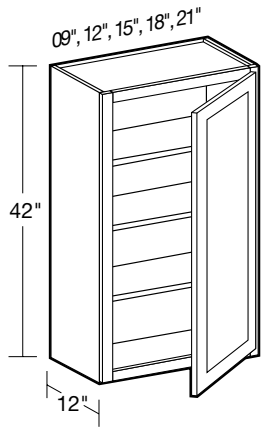
36" High Single Door



W0936
W1236
W1536
W1836
W2136

- Three adjustable shelves

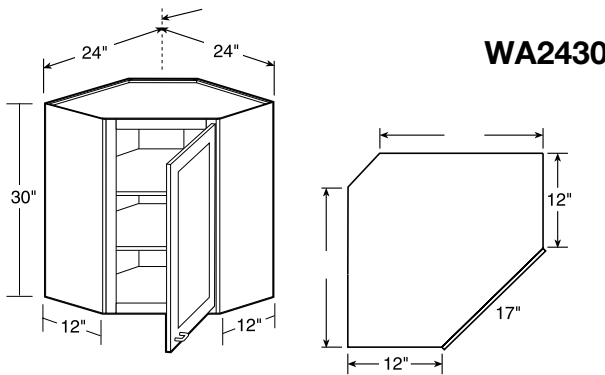
42" High Single Door



W0942
W1242
W1542
W1842
W2142

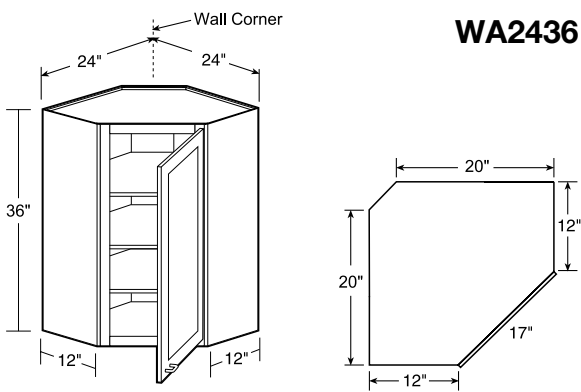
- Three adjustable shelves

30" High Wall Angle



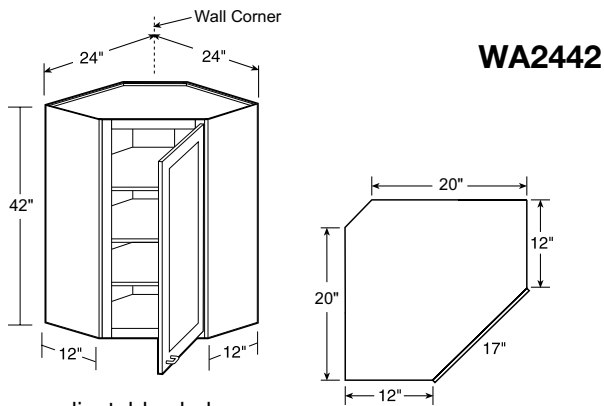
- Two adjustable shelves
- Clip corner back provides clearance for installation
- Clip corner back is 1/4" plywood

36" High Wall Angle



- Three adjustable shelves
- Clip corner back provides clearance for installation
- Clip corner back is 1/4" plywood

42" High Wall Angle

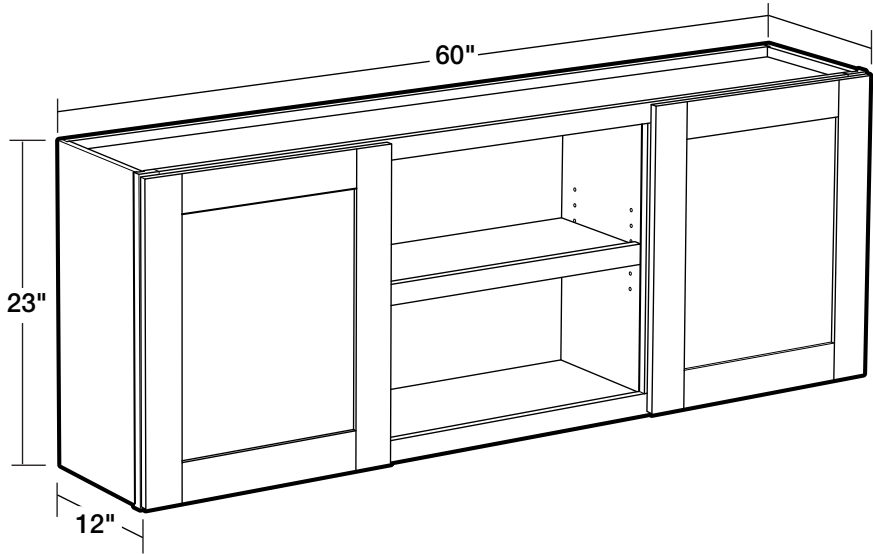


- Three adjustable shelves
- Clip corner back provides clearance for installation
- Clip corner back is 1/4" plywood

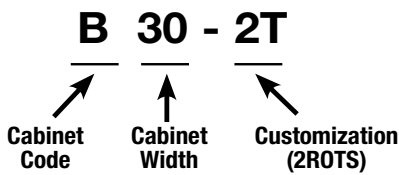
60" Wide Laundry Cabinet

- One adjustable shelf
- Two soft close doors
- Multi use utility cabinet

W6023

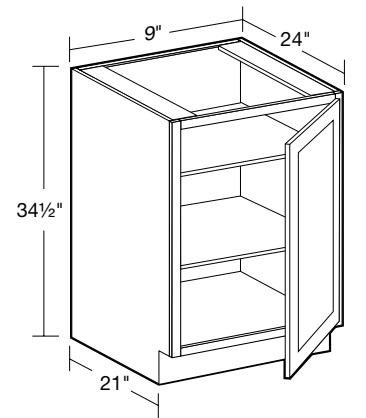


BASE CABINET CODING



- Standard Base Cabinets are 24" deep and 34½" high
- Cabinet depth does not include door thickness
- Products are available in all door styles unless stated otherwise
- Standard cabinet exterior is color matched to face frame
- Base cabinets are shipped with an unfinished toekick. Finished toekicks in MTK8 must be ordered separately and field installed. See page 11.
- Soft close hinges & full extension drawers with soft close

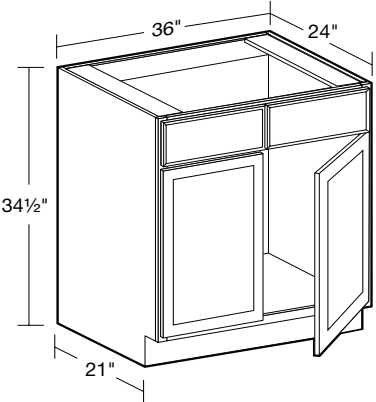
24" Deep Single Full Height Door



B09FH

- Two full-depth adjustable shelves

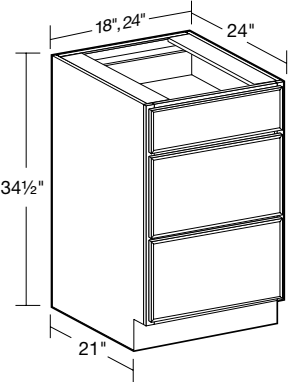
24" Deep Sink Base



SB36

- No shelf, two false drawer fronts
- May also be used as drop-in cooktop base

24" Deep Base - 3 Drawers

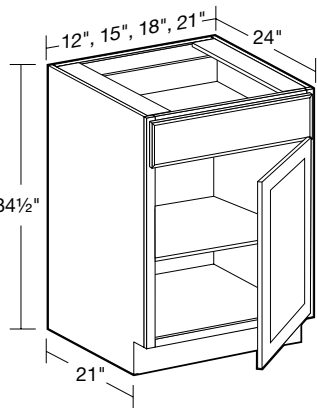


BD18

BD24

- One standard top drawer
- Two deep drawers
- * Maximum drawer handle width for lower drawers is 4" wide for raised panel styles, 5½" wide for recessed panel styles.

24" Deep Single Door



B12

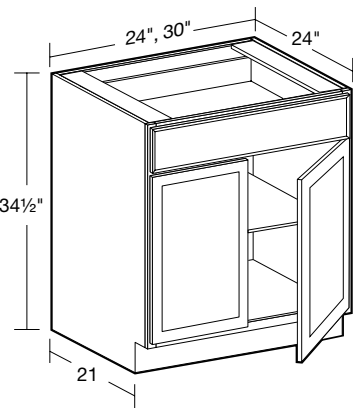
B15

B18

B21

- One full-depth adjustable shelf

24" Deep Double Door

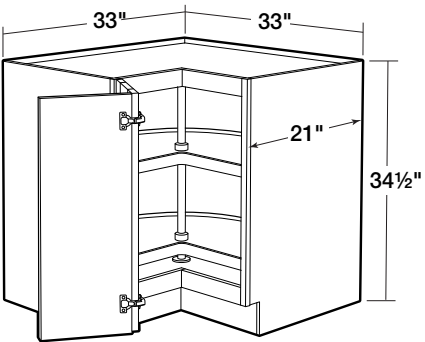


B24

B30

- One full-depth adjustable shelf

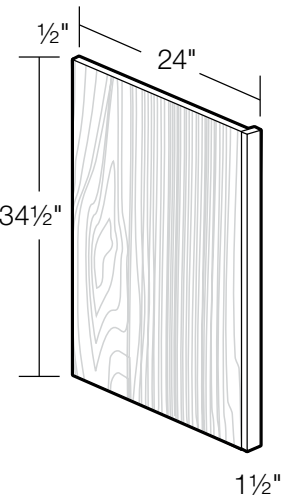
36" Easy Reach Super Suzan



EZR3621SS

- Polymer, pie-cut independently revolving shelves
- Doors open 170 degrees for easy access
- Cabinet requires 36" of space
- Cabinet face frame will need to be pulled so it lines up with adjacent cabinet face frames
- **SOFT CLOSE DOOR (SCD) OPTION NOT AVAILABLE**

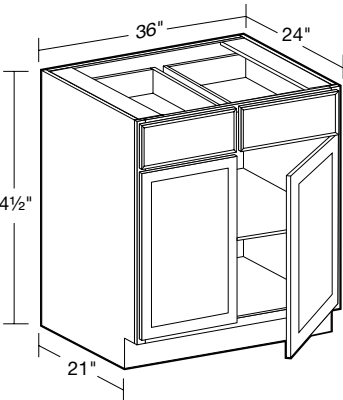
24" Deep End Panel with 1½" wide Filler



BP1.5

- 1½" wide filler included
- Filler is 3/4" thick vinyl wrapped MDF
- Panel and filler supplied loose for field assembly
- Reversible, may be installed left or right
- 1/2" thick plywood panel finished with laminate color matched to cabinetry face frame

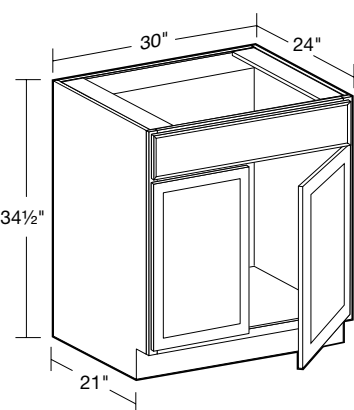
24" Deep Double Door



B36

- One full-depth adjustable shelf
- Two top drawers

24" Deep Sink Base



SB30

- No shelf, false drawer front
- May also be used as drop-in cooktop base

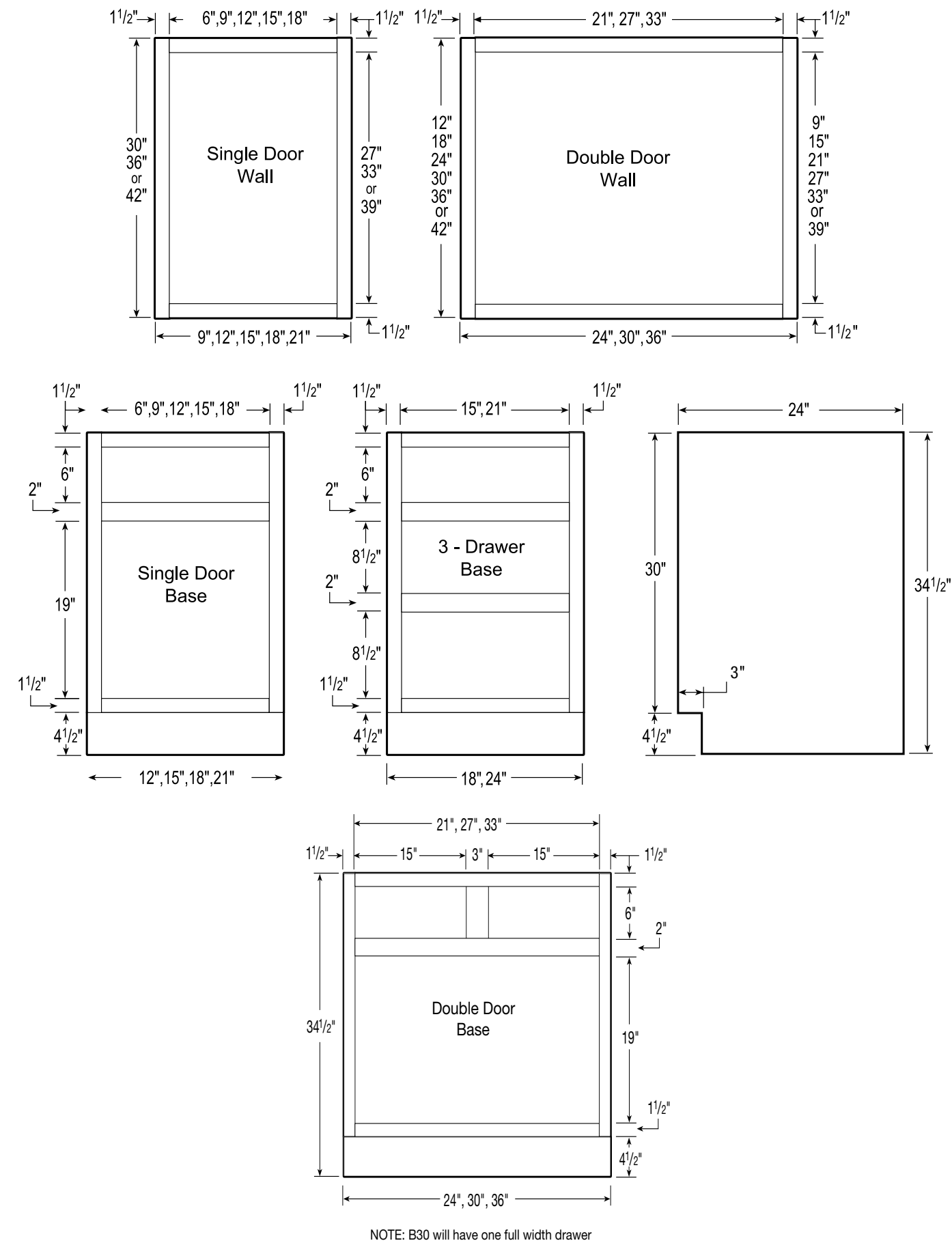


NEW for 2023 - Richmond Venetian Onyx

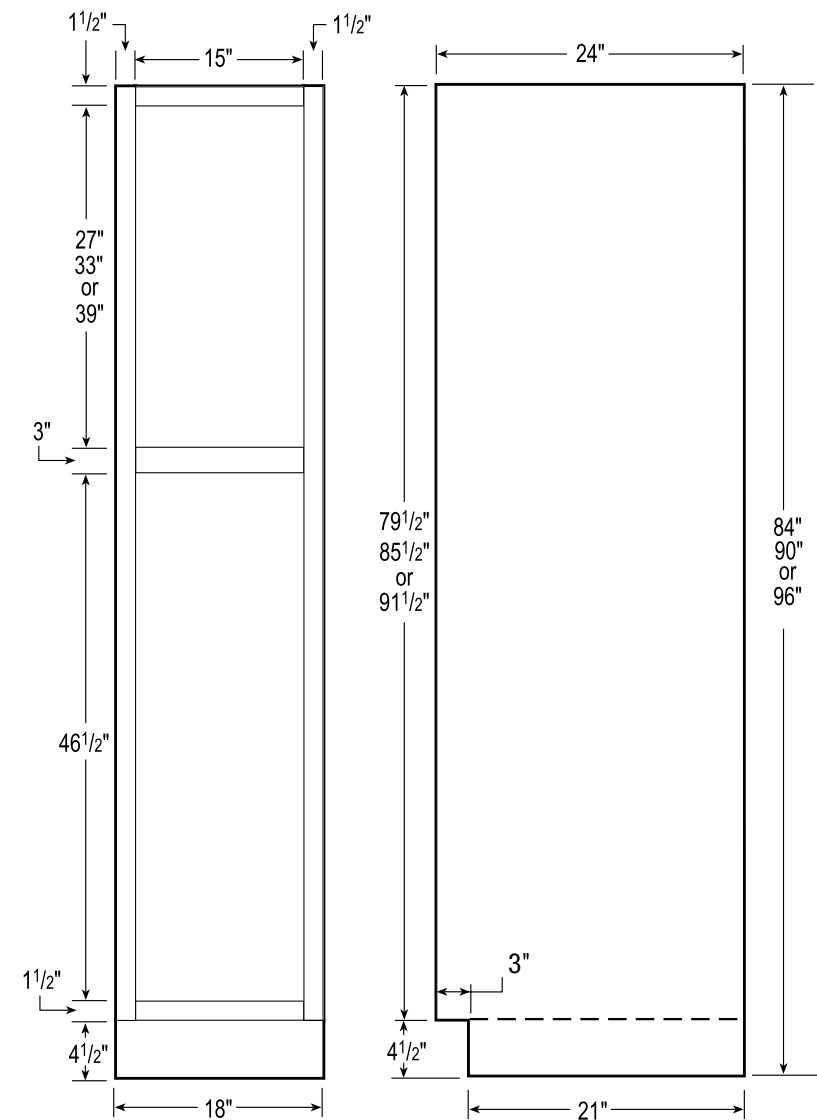
<div><div>TALL CABINET CODING</div><div><div>U182484</div><div><div>U</div><div>18</div><div>24</div><div>84</div><div><div>Cabinet Code</div><div>Cabinet Width</div><div>Cabinet Depth</div><div>Cabinet Height</div></div></div></div><div><div><div>Standard Tall Cabinets are 24" deep</div><div>Add door thickness for total cabinet depth</div><div>Products are available in all door styles unless stated otherwise</div><div>Standard cabinet exterior is color matched to face frame</div><div>Soft close hinges</div></div></div></div>	<div><div>24" Deep Two Door Utility</div><div>U182496</div><div><div><div><div>18"</div><div>24"</div><div>96"</div><div>21"</div><div>42"</div></div><div><div>- One fixed shelf dividing upper and lower doors, five adjustable shelves</div><div>* Loose toe kick box for ease of installation</div></div></div><div><div>NOTE: Loose toe kick box will have a finished side, but will have a seam at bottom</div></div></div></div>
<div><div>24" Deep Two Door Utility</div><div>U182484</div><div><div><div><div>18"</div><div>24"</div><div>84"</div><div>21"</div><div>30"</div></div><div><div>- One fixed shelf dividing upper and lower doors, four adjustable shelves</div></div></div></div></div>	<div><div>24" Deep Refrigerator Panel with 1½" wide Filler</div><div>RP1.590 RP1.596</div><div><div><div><div>1½"</div><div>24"</div><div>90"</div><div>96"</div><div>1½"</div></div><div><div>- 1½" wide filler included</div><div>Filler is 3/4" thick vinyl wrapped MDF</div><div>Panel and filler supplied loose for field assembly</div><div>Reversible, may be installed left or right</div><div>1/2" thick plywood panel finished with laminate color matched to cabinetry face frame</div><div>Filler may be scribed up to 5/8"</div></div></div></div></div>
<div><div>24" Deep Two Door Utility</div><div>U182490</div><div><div><div><div>18"</div><div>24"</div><div>90"</div><div>21"</div><div>36"</div></div><div><div>- One fixed shelf dividing upper and lower doors, four adjustable shelves</div></div></div></div></div>	

<div><div>Filler Strips</div><div><div><div><div>30"</div><div>36"</div><div>or</div><div>42"</div><div>3"</div><div>or</div><div>6"</div></div><div><div>3"</div><div>3/4"</div></div></div><div><div>FS30</div><div>FS36</div><div>FS42</div><div>FS636</div></div><div><div>- Filler is 3/4" thick vinyl wrapped MDF</div><div>Face and sides finished</div></div><div><div>NOTE: Thick dark lines indicate finished edges</div></div></div></div>	<div><div>Tall Filler Strips</div><div><div><div><div>84"</div><div>90"</div><div>96"</div><div>3"</div><div>3/4"</div></div><div><div>- Filler is 3/4" thick vinyl wrapped MDF</div><div>Face and sides finished</div></div></div><div><div>FS84</div><div>FS90</div><div>FS96</div></div><div><div>NOTE: Thick dark lines indicate finished edges</div></div></div></div>
<div><div>Contemporary Crown Molding</div><div>CMV8</div><div><div><div><div>8'</div><div>2 5/8"</div><div>2 3/4"</div></div><div><div>- 3/4" thick solid MDF</div><div>NOTE: Thick dark lines indicate finished edges</div></div></div></div></div>	<div><div>Scribe Molding</div><div>SM8</div><div><div><div><div>8'</div><div>1/4"</div><div>3/4"</div></div><div><div>- 1/4" thick solid wood</div><div>NOTE: Thick dark lines indicate finished edges</div></div></div></div></div>
<div><div>8' Finished Toe Kick – Matches Frame Color</div><div>MTK8</div><div><div><div><div>1/8"</div><div>8'</div><div>4 1/2"</div></div><div><div>- 1/8" thick plywood finished with laminate color matched to cabinetry face frame</div><div>Field modified and installed</div></div></div><div><div>NOTE: Thick dark lines indicate finished edges</div></div></div></div>	

Cabinet Frame & Opening Dimensions



Cabinet Frame & Opening Dimensions



NOTE: 96" TALL CABINETS ARE SUPPLIED WITH LOOSE TOE KICK BOX

The logo for Mill's Pride, featuring the brand name in a white serif font inside a green rectangular box with a decorative border.A modern kitchen with dark grey cabinets, a white countertop, and a large island with a marble top. The kitchen features a stainless steel refrigerator, a microwave, and a gas stove. Three wooden bar stools are tucked under the island. A window above the sink provides natural light.

NEW for 2023
Richmond Venetian Onyx

QUICK SHIP - QUICK ASSEMBLY

Have Questions? Need Design Help?

 [MillsPride.com](https://millspride.com)  homerdesigntools.com  866-931-6874

Monday-Friday 9 A.M. to 8 P.M. EST | Saturday 9 A.M. to 6 P.M. EST

January 2023

KCMA

CARB2 compliant



MILLSPRIDE-SPECBOOK-1222

